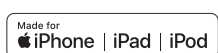




Professional label printer range

- Print in black and red to highlight important information.
- Wide range of connectivity options.
- PC, Mac®, iOS® and Android™ compatibility.
- High speed printing of up to 110 labels per minute*.
- Use continuous rolls and cutter to print labels up to three feet in length.
- Stand-alone printing function where no PC required – ideal for food and retail applications.

* Based on using standard address labels, black text only, at 300 X 300 dpi.



The Brother QL-800 series professional label printers offer unrivalled versatility not only in the office, but also retail, food, postal, facilities management and other industries.

Create labels with black and red* print up to three feet in length, from PC, Mac, iOS or Android devices. Several wired and wireless connectivity options are available, and even the ability to directly print labels stored in the printer's memory using the integrated LCD/control panel on the Brother QL-820NWB, or external devices connected to the printer.

For developers and systems integrators looking to incorporate label printing as part of their solutions, software development kits for Windows, iOS and Android offer an easy way to add support for the Brother QL-800 series label printers.



Summary of features



QL-800



QL-810W



QL-820NWB

Uses DK labels and tapes up to 2.4-inches wide	X	X	X
Die-cut and continuous-length label rolls	X	X	X
Automatic cutter	X	X	X
Labels per minute print speed ¹	Up to 93	Up to 110	Up to 110
Amazing Black/Red Print using DK-2251	X	X	X
Windows- and Mac-compatible	X	X	X
Mobile printing via iPrint & Label app ²	X- Android only with USBtoGO cable ³	X	X
Wireless interface		X	X
Li-ion Battery capable (option) ³		X	X
ESC/P P-touch template (6mb/99 255)		X-99	X-255
Bluetooth® technology (Ver.2.1+EDR SPP, BIP,OPP, HCRP and iAP/MFI supported) interfaces			X
Backlit LCD display			X
Wired Ethernet			X
Host USB interface			X

* Requires DK-22251 continuous roll to print in black and red

1. Based on using standard address labels, text only, at 300 x 300 dpi.

2. Requires connection to a wireless network. For more details regarding the Brother iPrint & Label app visit www.brother-usa.com.

3. Sold separately.



Versatile labeling options

Boasting the highest print speeds and the most connectivity options in their class, the Brother QL-800 series label printers are the ideal solution for many types of business.

Print amazing Black/Red labels using Brother DK-2251 tape

Brother QL-800 series is the only office category label printer to offer the technology that lets you print two colors over the entire label!



Wide range of connectivity options

All models allow easy connection to desktop computers using USB. Additionally the Brother QL-810W incorporates Wi-Fi, while the flagship Brother QL-820NWB also adds Ethernet and Bluetooth® wireless connectivity.

Create labels the size you need

Labels are available in a range of traditional die-cut (pre-sized), or continuous rolls that lets the built-in cutter trim your label to the precise length needed (up to three feet).

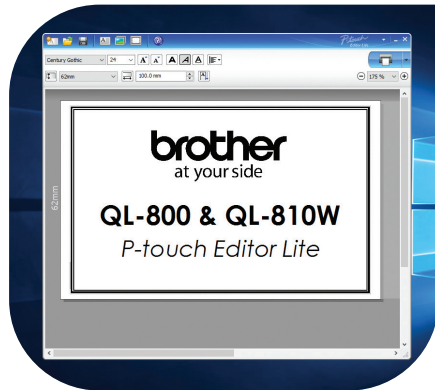


Print from desktop and mobile devices, or stand-alone

All models are PC/Mac compatible, whereby the Brother QL-810W and QL-820NWB connect to smartphones and tablets using the built-in wireless connections. Additionally you can select and then print labels stored in the memory of the Brother QL-820NWB using the large LCD display and integrated control panel.

Software solutions

With label design apps for desktop PC's and mobile devices, and SDK's to integrate the QL range into your own applications, you can choose the best option for your label printing needs.

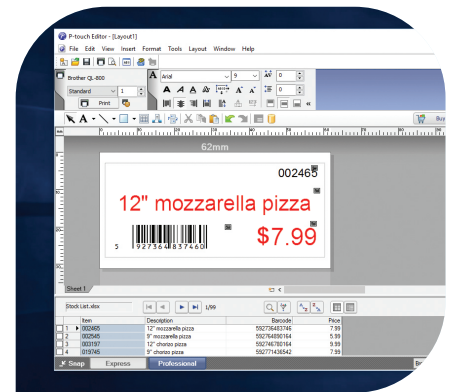


P-touch Editor Lite* / P-touch Editor Lite LAN*

Built inside the Brother QL-800 and QL-810W, this easy to use label design software works without the need to install software or drivers. Working like a USB flash drive, simply connect to your PC/Mac using USB, and launch the software from the drive that appears. Include images, frames and any of your fonts on your label design and print! A version for network connected models is also available - simply run the software to allow many PC's in an office to print labels to the one printer. Again, no installation needed.

P-touch Editor with Microsoft Office add-in

Design professional labels including images and logos, barcodes and frames. Link to data contained in Excel or .csv files, to print many labels quickly and efficiently. The Microsoft Office add-in lets you highlight, click and print right from within Word, Excel or Outlook.

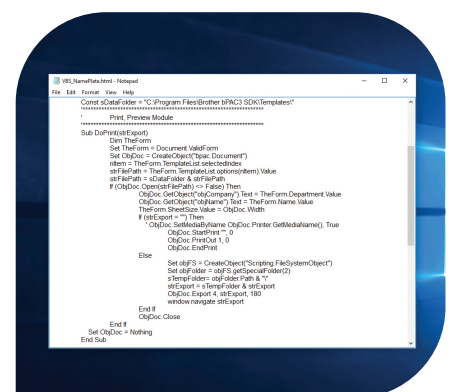


Brother iPrint&Label app** for iOS and Android smartphones/tablets

Print labels on the Brother QL-810W and QL-820NWB using the free iPrint&Label app. Connect via Wi-Fi or Bluetooth (on Brother QL-820NWB), and choose one of the pre-defined templates or quickly design your label from scratch. This free app is available from your mobile device's app store by searching "Brother iPrint&Label".

Software Development Kits for Windows, iOS and Android

System integrators and software developers can now take advantage of various Brother SDK's that allow easy integration of label printing directly within their own apps and software. For more information please visit <http://www.brother-usa.com/lp/civ/home.aspx>.



* Black print capability only. Use P-touch Editor for black and red printing
 ** Red print capability from iPrint&Label app available summer 2017

Advanced functionality

The Brother QL-820NWB with its stand-alone print function and remote FTP template update allows label printing directly from the control panel. Plus wide connectivity options offer compatibility with virtually any device (smartphones, tablets, and barcode scanners) ...

Stand-alone label printing

The Brother QL-820NWB has a large memory to store label templates designed in P-touch Editor. Label templates can be downloaded to the printer's memory, and accessed using the integrated control panel and backlit graphic LCD display. Ideal for printing current or future date/time on labels in the food and retail industries.



Remote template update via FTP

Where the Brother QL-820NWB is deployed at multiple locations, updating the templates in all printers would normally be a time intensive operation. However the printer can automatically connect using FTP to a remote server, and if new templates are found, update these automatically. This helps companies save time and money, and ensures consistent operation at all remote sites. All this directly from the printer via the internet, without needing a PC connection.

AirPrint®* and Bluetooth® with MFi (Made for iPod/iPhone/iPad) compatibility

The Brother QL-810W and QL-820NWB both support Apple® AirPrint* to enable printing from compatible apps on iOS devices and Mac. Additionally, the Brother QL-820NWB offers Bluetooth® connectivity to easily connect iOS and Android devices to the printer.



* iOS and macOS only supports black print when using the default AirPrint function, however red print capability is available from iOS devices when using apps developed using the Brother Software Development Kit.

Office

There are so many uses for labels around the office. In addition to address labels for envelopes and packages, identify the contents of files and storage boxes. Label shelves so items are returned to the correct place. The black/red* printing capability enables essential information to be highly visible, such as valid-on dates on visitor badges. The continuous film rolls are also ideal for indoor signage, helping facilities managers create custom signs on demand.

* Requires DK-2251 roll



Visitor badges



Postage labels



Document filing

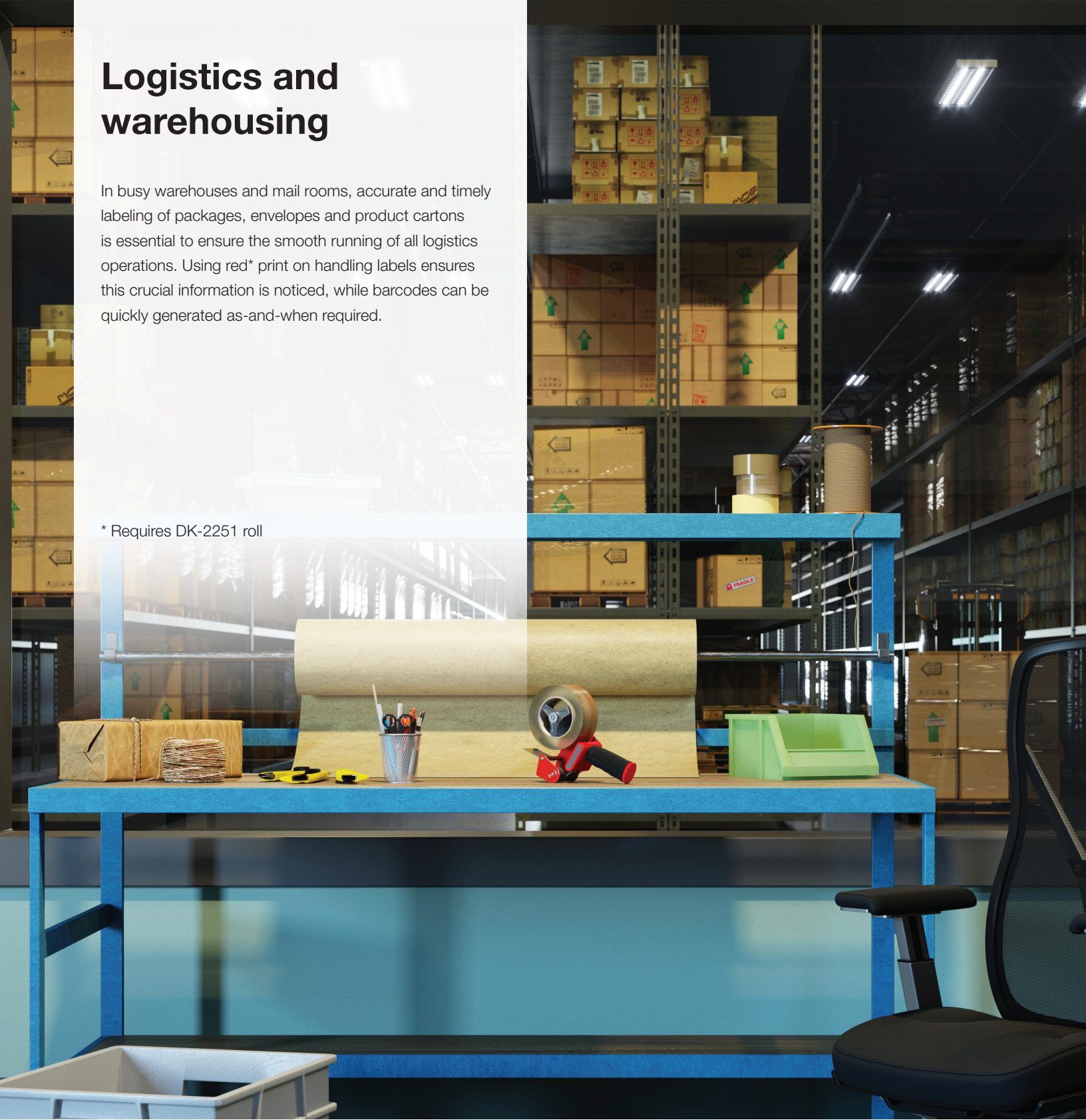


Indoor signage

Logistics and warehousing

In busy warehouses and mail rooms, accurate and timely labeling of packages, envelopes and product cartons is essential to ensure the smooth running of all logistics operations. Using red* print on handling labels ensures this crucial information is noticed, while barcodes can be quickly generated as-and-when required.

* Requires DK-2251 roll



Handling labels



Temporary signage



Shipping labels



Product packaging

Retail

Conveying product pricing and any special offers to shoppers quickly is crucial for the retail sector. Print pricing labels for product tags, that can also include barcodes. And use red* print on to highlight special offers, price mark downs, or promotions by creating eye-catching indoor signage.

* Requires DK-2251 roll



Pricing/Barcode labels



Promotion signage

Food

On-demand label printing is a critical part of the food industry, such as highlighting allergen information to consumers, show use-by/best before dates, and product pricing including EAN-8 / EAN-13 barcodes.

The Brother QL-820NWB with its stand-alone label printing function is ideal for counter-top use, and printing labels on-demand. Takeout stores can print details of orders, including address information where delivery is required.

It is great for printing Made-Ready-Discard (MRD)/food rotation labels on demand. Save time spent handwriting labels, Ensure consistency and 100 percent legibility on every label.



Takeout orders



Shelf-edge labelling



DK rolls for the QL-800 label printer range

Wide range of labels available in paper and plastic film material, pre-sized labels or continuous rolls

Die-Cut Paper Labels:

Item Number	Description	Uses	Label Size	Color	Labels per Roll
DK-1201	Standard Address	Postcard addresses, standard envelopes, binders, small packages, other mail	1.1" x 3.5" (29mm x 90.3mm)	Black on White	400
DK-1202	Shipping	Flat envelope addresses, binders, medium-size packages, storage boxes, other mail	2.4" x 3.9" (62mm x 100mm)	Black on White	300
DK-1203	File Folder	File folders	0.66" x 3.4" (17mm x 87.1mm)	Black on White	300
DK-1204	Multi-Purpose / Return Address	Envelope return addresses	0.66" x 2.1" (17mm x 54.3mm)	Black on White	400
DK-1208	Large Address	Files folders, flat envelopes, binders, storage boxes	1.4" x 3.5" (38mm x 90.3mm)	Black on White	400
DK-1209	Small Address	Postcard addresses, standard envelopes, binders, small packages, other mail	1.1" x 2.4" (28.9mm x 62mm)	Black on White	800
DK-1218	Round	Large microscope specimen samples	0.94" diameter (24mm)	Black on White	1,000
DK-1219	Round	Small microscope specimen samples	0.47" diameter (12mm)	Black on White	1,200
DK-1221	Square	Large microscope specimen samples	0.9" Square (23mm)	Black on White	1,000
DK-1234 [†]	Adhesive Name Badge	Visitor/Attendee Name Badge	2.3" x 3.4" (60mm x 86mm)	Black on White	260
DK-1240 [^]	Large Multi-Purpose	Flat envelope addresses, binders, large-size packages, storage boxes, other mail	1.9" x 4" (50.5mm x 101mm)	Black on White	600
DK-1241 [^]	Large Shipping	Flat envelope addresses, binders, large-size packages, storage boxes, other mail	4" x 6" (101mm x 152mm)	Black on White	200
DK-3235	Removable adhesive [‡]	Removable MRD/Food Safety	2.1" x 1.1" (54mm x 29mm)	Black on White	800
Film Labels:					
DK-1207	CD/DVD Labels	CD labels	2.2" diameter (58.2mm)	Black on White	100

Continuous Length Tapes*

Item Number	Description	Uses	Label Size	Color	Labels per Roll
DK-2251 [‡]	Two-Color	Pricing, signage, name badge, GHS labels, safety signs, allergy alerts	2.4" x 50' (62mm x 15.2m)	Red/Black on White	—
DK-2205	Wide Width	Flat envelope addresses, binders, medium-size packages, storage boxes, other mail	2.4" x 100' (62mm x 30.4m)	Black on White	—
DK-2210	Medium Width	Binder spines, postcards, standard envelopes, small packages, other mail	1.1" x 100' (29mm x 30.4m)	Black on White	—
DK-2214	Narrow Width	Video spines, file folders	0.47" x 100' (12mm x 30.4m)	Black on White	—
DK-2223	Wide Width	Flat envelope addresses, binders, medium-size packages, other mail	2.0" x 100' (50mm x 30.4m)	Black on White	—
DK-2225	Medium Width	Flat envelope addresses, binders, small packages, postcards, other mail	1.5" x 100' (38mm x 30.4m)	Black on White	—
DK-2243 [^]	Extra-Wide Width	Flat envelope addresses, binders, storage boxes, large-size packages, banners, signs	4" x 100' (101mm x 30.4m)	Black on White	—
DK-N5224	Wide Width	Non-adhesive, for name badges	2.1" x 100' (54mm x 30.4m)	Black on White	Approx 333 badges
Film Tapes:					
DK-2211	Medium (White)	Storage boxes, signs, displays	1.1" x 50' (29mm x 15.2m)	Black on White	—
DK-2212	Wide (White)	Storage boxes, signs, displays	2.4" x 50' (62mm x 15.2m)	Black on White	—
DK-2113	Wide (Clear)	Large window signs, wide envelopes	2.4" x 50' (62mm x 15.2m)	Black on Clear	—
DK-2606	Wide (Yellow)	Storage boxes, signs, displays	2.4" x 50' (62mm x 15.2m)	Black on Yellow	—
Removal Paper Tapes:					
DK-4205	Wide (White)	Name badges, storage boxes	2.4" x 100' (62mm x 30.4m)	Black on White	—
DK-4605	Wide (Yellow)	Name badges, storage boxes	2.4" x 100' (62mm x 30.4m)	Black on Yellow	—

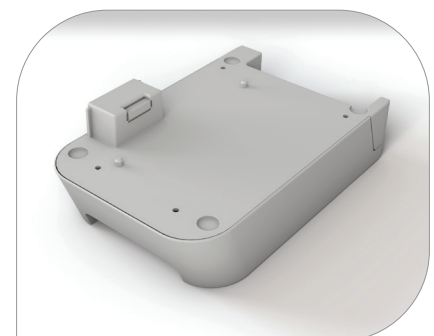
* Additional purchase required. [^] 4" wide format format DK supplies are compatible only with the Brother QL-1050/1050N/1060N. [†] Compatible with Brother QL-700/710W/720NW/QL-800 series.

[‡] Removable adhesive labels can be cleanly removed from general, smooth, flat surfaces. [‡] For use with QL-800, QL810W, and QL-820NWB.

Accessories

Optional rechargeable battery unit (PA-BU-001)

This li-ion rechargeable battery unit mounts to the base of the QL-810W and QL-820NWB to offer label printing away from power sources. This makes it ideal for use on rolling carts, or for exhibition badge printing. Features a fast-charge of under 2 hours 30 minutes, and provides printing of over 2,000 labels during continuous printing on a full battery charge.[‡]



[‡] Continuous printing using Wi-Fi when fully charged

Specifications

QL-800

QL-810W

QL-820NWB

Printing / Media

Printing technology	Direct Thermal	
Maximum Resolution (dpi)	300 x 600 (Superfine Mode)	
Maximum Print Speed (labels per min.)*	Up to 93 labels per minute	Up to 110 labels per minute
Print Black/Red labels using DK-2251	Yes	
Tape Sizes	Die-cut and Continuous	
Maximum Tape Width (inches)	2.4"	
Maximum Print Width (inches)	2.3"	
Maximum Label Length	3 feet	
Cutter	Auto	
Cutter Life	up to 300,000 (die-cut labels) 150,000 (continuous labels)	

Connectivity

USB	USB version 2.0 full-speed	
USB host capability		Yes (HID class)
Bluetooth® wireless technology		Bluetooth 2.1+EDR
Bluetooth® profiles		SPP(Serial Port Profile) OPP(Object Push Profile) BIP(Basic Imaging Profile) HCRP(Hard Copy Cable Replacement Profile) iAP/(MFIsupported) profile
Wireless LAN		IEEE802.11b/g/n
Wireless LAN / Wired LAN security (Infrastructure mode)		WEP, WPA-PSK/WPA2-PSK (TKIP/AES), LEAP (CKIP), EAP-FAST (TKIP/AES), PEAP (TKIP/AES), EAP-TTLS (TKIP/AES), EAP-TLS (TKIP/AES)
AirPrint®		Yes
Wired LAN		10/100 Base-TX

LCD

Type		320x120 dot graphic LCD with backlight
------	--	--

Mobile Device Compatibility

Software/App^	Brother iPrint&Label, free app download for USBtoGo printing from your Android™ mobile device	AirPrint®, Brother iPrint&Label, free app download for wireless printing from your Apple® or Android™ mobile device
---------------	---	---

Memory

Flash (for label templates)		6MB
Locations (for label templates)	99	256

Power

Power	120V ~ 60Hz 1.7A	100-240V - 50/60Hz 1.5A
ENERGY STAR® certified	Yes	
Battery (optional accessory)	Optional Li-ion Battery (PA-BU-001)	
Battery print yield	Provides printing of over 2,000 black text labels during continuous printing on a full battery charge via WiFi	
Battery charging time	Less than 2 hours 30 minutes	

Specifications

QL-800

QL-810W

QL-820NWB

Weights / Dimensions

Dimensions	4.9" x 5.6" x 8.4"	5.0" x 5.7" x 9.2"	
Weight	2.5 lbs.	2.4 lbs.	2.5 lbs.

Software / Firmware

Operating System	Windows Vista, Windows 7, Windows 8/8.1, Windows 10; Mac OS X 10.10.5 - 10.12.x	Windows Vista, Windows® 7, Windows 8/8.1, Windows 10; Server 2008/2012; Mac OS X 10.10.5 - 10.12.x	
SDK availability (visit http://www.brother-usa.com/lp/civ/home.aspx)	b-PAC (for Windows)	b-PAC (for Windows) Brother Print SDK for Android™ Brother Print SDK for iPhone/iPad (for iOS)	
Supported printer commands	Raster	Raster ESC/P P-touch Template	
Barcode symbologies (using P-touch Editor)	CODE39, CODE128, UCC/EAN128(GS1-128), ITF(I-2/5), CODABAR(NW-7), UPC-A, UPC-E, EAN13, EAN8, ISBN-2(EAN13 AddOn2), ISBN-5(EAN13 AddOn5), Laser Barcode, POSTNET, RSS(RSS14 Standard, RSS14 Truncated, RSS14 Stacked, RSS14 Stacked Omni, RSS Limited, RSS Expanded, RSS Expanded Stacked), PDF417(Standard, Truncate, Micro), QR code(Model1, Model2, Micro), Data Matrix(ECC Square, ECC Rectangular), MaxiCode(Model2, Model3, Model4, Model5)RSS symbols / CODE93 / POSTNET / UPC/EAN EXTENSION / MSI / QR Code (model 1, model 2, micro QR)PDF417 (Standard, Truncate, Micro)PDF417 / Data Matrix(ECC200 Square, ECC200 Rectangular) / MaxiCode / Aztec		
Barcode symbologies (Built-in printer firmware)		CODE39, CODE128, UCC/EAN-128(GS1-128), ITF(I-2/5), CODABAR(NW-7), UPC-A, UPC-E, EAN13(JAN13), EAN8, GS1 DataBar(RSS)(GS1 DataBar Omnidirectional, GS1 DataBar Truncated, GS1 DataBar Stacked, GS1 DataBar Stacked Omnidirectional, GS1 DataBar Limited, GS1 DataBar Expanded, GS1 DataBar Expanded Stacked), PDF417(Standard, Truncate, Micro), QR Code(Model 1, Model 2, Micro), Data Matrix (ECC200 Square, ECC200 Rectangular), MaxiCode, CODE93, POSTNET, UPC-E EXTENTION	
Internal fonts		Bitmap fonts: Letter Gothic Bold, Helsinki, Brussels, San Diego, Brougham Font sizes: 24, 32, 49 dots Outline fonts: Letter Gothic Bold, Helsinki, Brussels Font sizes: 33-400 dots (22 sizes)	
Date/Time Stamp	PC Generated		Internal Time/Date, PC generated

Included items

In the box	Software, USB Cable, Power Cord, Quick Setup Guide, Documentation, Starter rolls: DK-1201 Die-cut Standard Address Labels (100 labels), plus DK-2251 2.4" (62mm) Continuous Length Black/Red on White Paper Tape 16.4 ft. (5m)	Software, USB Cable, AC Adapter, Quick Setup Guide, Documentation, Starter rolls: DK-1201 Die-cut Standard Address Labels (100 labels), plus DK-2251 2.4" (62mm) Continuous Length Black/Red on White Paper Tape 16.4 ft. (5m)	
------------	--	--	--

* Based on using standard address labels, text only, at 300 x 300 dpi.

^ Requires connection to a wireless network. For more details regarding Brother iPrint&Label app visit www.brother-usa.com and search iPrint&Label.

brother

at your side



All trademarks and registered trademarks referenced herein are the property of their respective companies.

Use of the Made for Apple and Works with Apple badges means that an accessory has been designed to connect specifically to the Apple product(s) identified in the Made for Apple badge and to work specifically with the technology identified in the Works with Apple badge, and has been certified by the developer to meet Apple performance standards. Apple is not responsible for the operation of this device or its compliance with safety and regulatory standards.

iPad, iPhone and iPod, AirPrint and the AirPrint logo and Mac are trademarks of Apple Inc., registered in the U.S. and other countries.

The Bluetooth word mark and logos are owned by the Bluetooth SIG, Inc. and any use of such marks by Brother Industries, Ltd. is used under license.

All specifications are subject to change without notice. Brother is a registered trademark of Brother Industries Ltd. Brand product names are registered trademarks or trademarks of their respective companies.

© 2015 Google Inc. All rights reserved. Android is a trademark of Google.

© 2017 Brother International Corporation
200 Crossing Boulevard, Bridgewater, NJ 08807

Images are for illustrative purposes only. Product information and specifications are based on publicly available information. Printed in the U.S.A.